

Tube transport chains

Problem/initial situation: Gentle support and reliable transportation for thin-walled hollow bodies through several processing stations (cleaning, painting, drying...).

Our solution: iwis high performance chains – roller chains with corrosion-resistant, easy to change attachments. **Exclusive to iwis.**

Highlights

- Transport bars can be changed easily on site using the special iwis tool provided; no need to break the chain or remove it from the machine
- Adapter and bars made of highly alloyed, corrosion-resistant steels with good elastic characteristics
- iwis standard roller chains with particular wear-resistant SL-pins are used, so longer service life in comparison with hollow pin chains
- Transport bars available in required lengths with 1mm graduations
- Different shapes for bar ends available – for example **protection heads made of aluminium or plastic**
- Freely selectable distance between the bars
- 1/2", 5/8" und 3/4" also available in curved side design (only ANSI)
- Basic chains also available in **maintenance free version** (MEGALife)



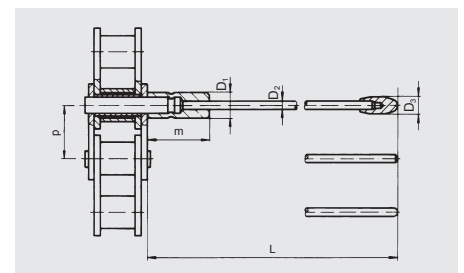


platinikov / 123RF Stock Foto

Technical dimensions

DIN/ISO no.	Ref. no. iwis	Pitch p (mm)	L-max. (mm)	D ₁ (mm)	m (mm)	D ₂ (mm)	D ₃ (mm)
08B-1	L 85 SL	12,7	300	8,0	22,0	4,0	8,0
10B-1	M 106 SL	15,875	300	8,0	22,0	4,0	8,0
12B-1	M 127 SL	19,05	300	8,0	22,0	4,0	8,0
12A-1 ANSI 60	M 128 ASL	19,05	300	8,0	22,0	4,0	8,0

Please state the length L in any enquiry or order.



Technical features

- The bars are pinched on to the extended pins of the base chain using an adapter and secured by fins to prevent twisting
- The bar can be changed quickly and easily if a repair is needed by breaching open the adapter with the iwis special tool (see illustration)

Areas of application

- Everywhere where tubes and other thin-walled hollow bodies (cans) are transported, cleaned, painted, dried...

