



Kiln Dryer Chain for extreme temperatures

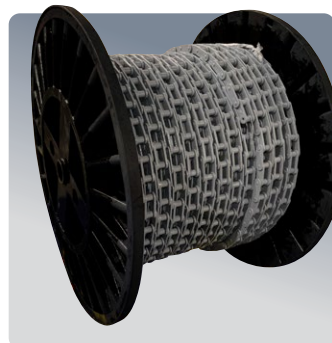


German Engineered to perform at extreme temperatures in the production of gypsum wallboard

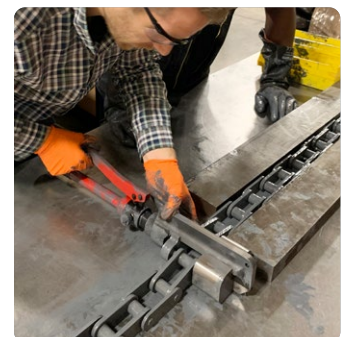
The production of gypsum wallboard introduces high contamination, extreme temperatures, long chain lengths and a low desire for chain maintenance. iwis's KD chain combines optimal materials and clearances with our iwis DXT1000 lubrication to perform in this harsh environment.

Technical Features:

- H.SP technology pins to provide strength and ductility at high temperatures
- Special alloy bushing selected to provide optimal wear life
- Increased lateral clearance to accommodate thermal expansion at high temperatures
- German DXT1000 lubrication supports long chain life up to 1000 °C (1832 °F)
- Supplied in lengths ranging from 10 ft up to 650 ft. Longer lengths supplied on returnable metal reels



Returnable metal reel



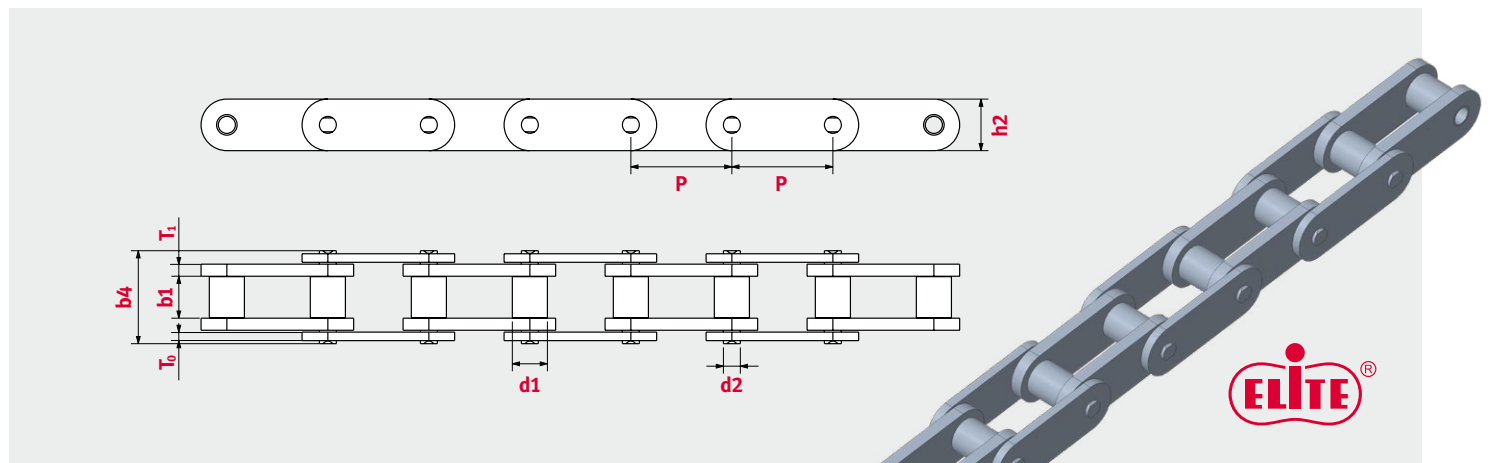
Installation tools available



ELITE Chains have been tested in the most rigorous applications and exceeding customer expectations

Kiln Dryer Chains

Chain type	Pitch	Width between inner plates	Pin diameter	Roller diameter	Outer plate thickness	Inner plate thickness	Height inner plate	Overall pin length	Average tensile strength	Maximum recommended working load	Weight
	P inch	b1 min inch	d2 max inch	d1 max inch	T₀ inch	T₁ inch	h2 max. inch	b4 max. inch	lbs.	lbs.	lbs./ft.
81XKD	2.609	1.060	0.437	0.906	0.155	0.155	1.125	1.930	24,000	3,000	2.500
81XHKD	2.609	1.060	0.437	0.906	0.220	0.310	1.332	2.577	42,000	3,700	4.120
3000HKD	3.000	1.312	0.750	1.500	0.375	0.375	2.000	3.220	70,000	7,100	10.700



Chain Condition Monitoring

Intelligent Chain Monitoring

- Gives maintenance staff time to (re)act!
- No risk to promised delivery dates – no interruption of the logistics chain
- Prevents financial losses caused by interruptions to production
- Monitoring of precision chain applications
- "Plug and Play" principle applies – does not require calibration, etc.
- Wear- and impact-resistant sliding shoe
- Stable, leakproof plastic housing (Protection class: IP67)

- ✓ Digitalisation interface
- ✓ Ready-to-install plug-and-play principle
- ✓ Optimised design

