



## Cast steel chain C600 – “For when the going gets tough”

You can rely on the **cast steel chain C600** to deal with the toughest traction applications and move the heaviest loads. The chain’s simple yet robust cast steel design makes it an economical and highly resilient partner for the most rugged conditions and over long distances.

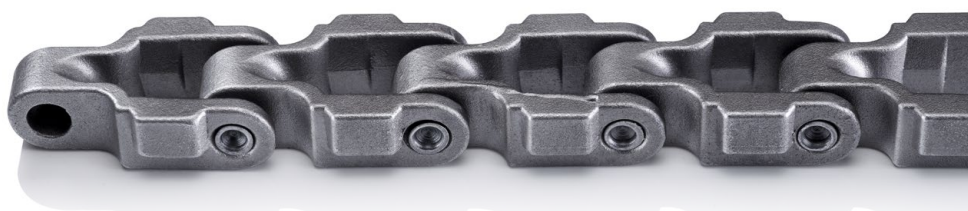
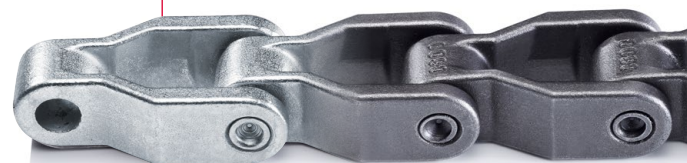
### Highlights

- Breaking loads increased about 25% by using cast steel rather than cast iron chains
- Alternative galvanized, zinc plated version for corrosion protection
- Threaded pins in connecting link for easy closing and unclosing of chain
- Both versions also available in plastic

### Applications & Industries

- Timber industry
- Construction materials industry
- Cage pallet transport
- Pallet conveyor systems
- Barrel / gas bottles / container transport

Alternative:  
galvanized, zinc plated version





## Technical dimensions

Chain type	Pitch	Link length	Pin $\varnothing$	Chain height	Chain width	Width sprocket gap	Width over TAB	Height TAB	Side bow radius	Mean breaking load	Weight per meter
	<b>P</b> mm	<b>L</b> mm	<b>d2 max</b> mm	<b>h1</b> mm	<b>B</b> mm	<b>B2</b> mm	<b>B3</b> mm	<b>h3</b> mm	<b>R</b> mm	<b>Q<sub>0</sub></b> N	<b>q</b> kg/m
C 600	63,5	90	11	30	44	13	–	–	500	60.000	4,83
C 600 TAB	63,5	90	11	30	44	13	55	18	500	60.000	5,70

Delivery length: 3.048 m / 48 links

