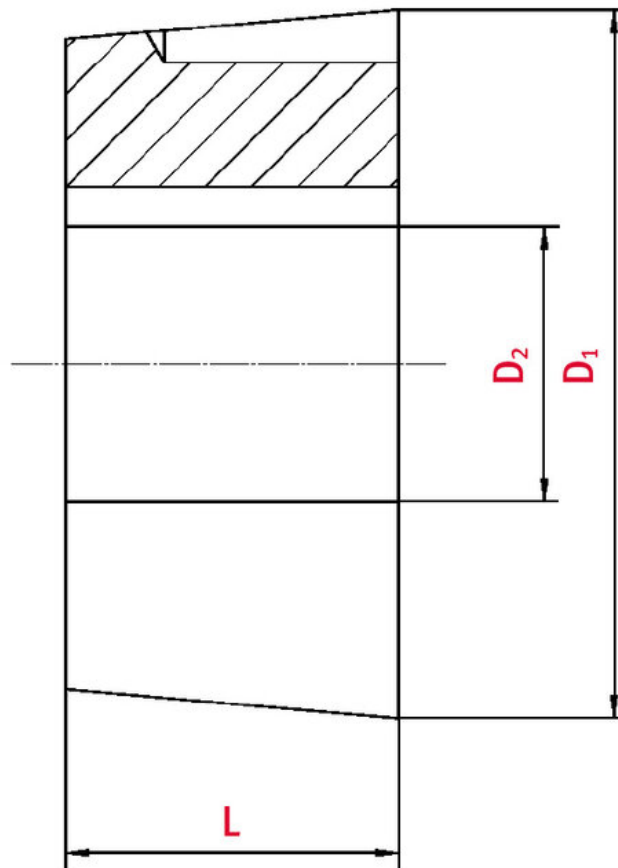




Taper-lock bush

Part no.: 81006917

Packaging Unit: 1pce



Technical data

SPROCKET	
Taper-lock bush (Ref.-Nr.)	1610
Inner bore diameter	22
Length	25,4

Diameter

57

Product Information

Taper-lock clamping hubs enable the precise axially-centred fixing of hubs on shafts. When used with sprockets, they offer a twofold advantage over a shaft-to-hub connection with keyways: quick fitting and better centring.

REQUEST DIRECTLY ONLINE NOW

<https://www.iwis.com/en-en/products-services/taper-lock-bush~p2095437>

Useful information

CALCULATION PROGRAM

InduKet: the Chain Drive
Calculation Program for
Engineers.

[iwis.com/chaincalc](https://www.iwis.com/chaincalc)

CHAIN CALCULATION

The right drive solution for your
challenge.

chaindrive@iwis.com

SERVICES

ChainFinder, CAD data, iwis
Chain Handbook and more.

[iwis.com/services](https://www.iwis.com/services)