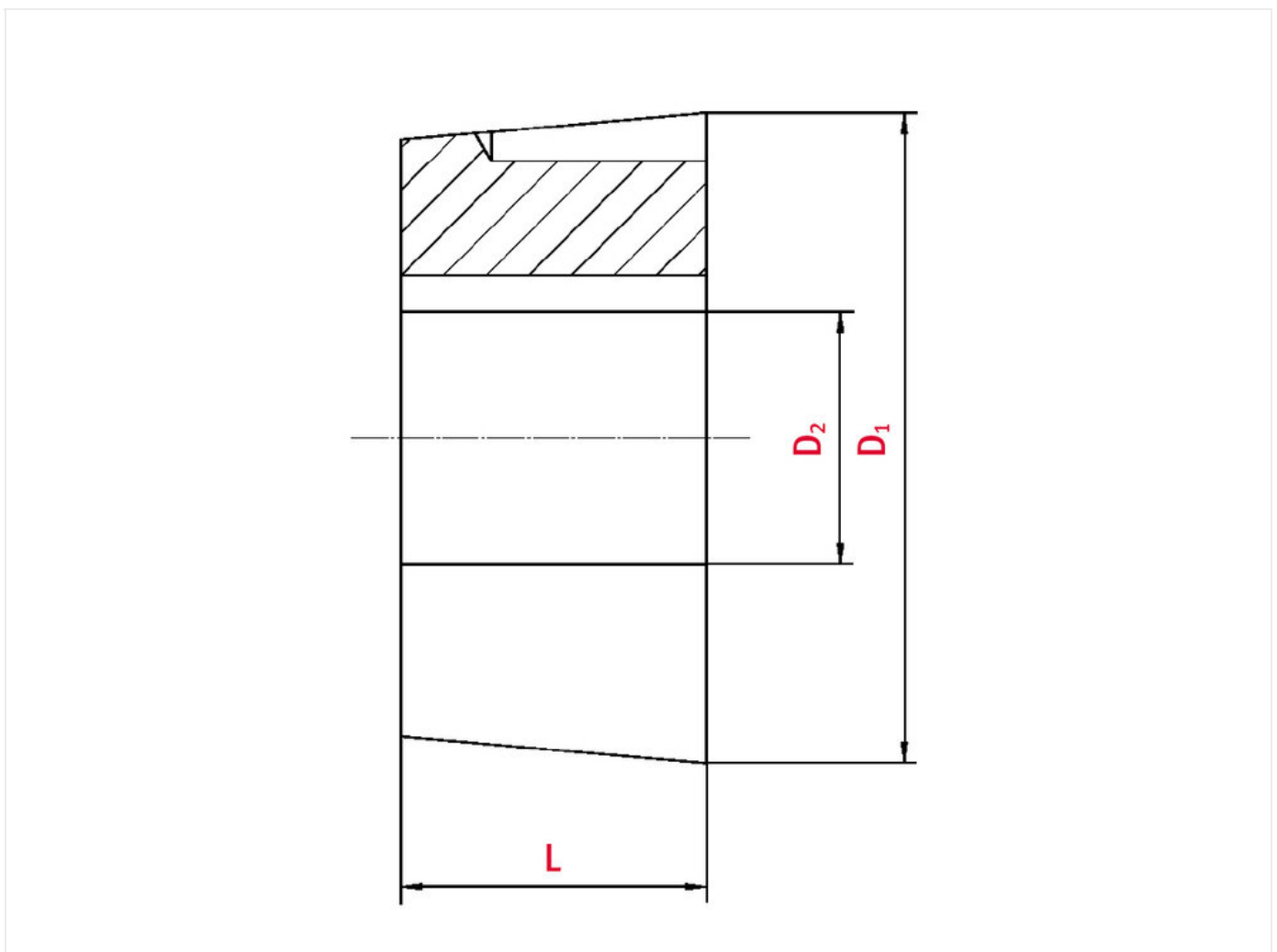




## Taper-lock bush

Part no.: 81006991  
Packaging Unit: 1pce



## Technical data

SPROCKET	
Taper-lock bush (Ref.-Nr.)	3020
Inner bore diameter	75
Length	50,8

Diameter

108

## Product Information

Taper-lock clamping hubs enable the precise axially-centred fixing of hubs on shafts. When used with sprockets, they offer a twofold advantage over a shaft-to-hub connection with keyways: quick fitting and better centring.

**REQUEST DIRECTLY ONLINE NOW**

<https://www.iwis.com/en-en/products-services/taper-lock-bush~p2095512>

## Useful information

### **CALCULATION PROGRAM**

InduKet: the Chain Drive Calculation Program for Engineers.

[iwis.com/chaincalc](https://www.iwis.com/chaincalc)

### **CHAIN CALCULATION**

The right drive solution for your challenge.

[chaindrive@iwis.com](mailto:chaindrive@iwis.com)