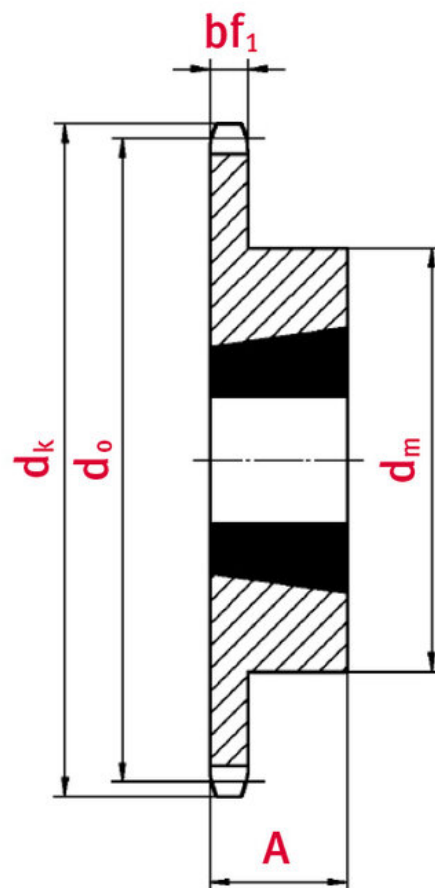


## Sprocket with taper-lock bush 16B-1 21 teeth

Part no.: 81006835

Model: 21 teeth



## Technical data

SPROCKET	16B
Teeth	21
Tooth width simplex bf1 (mm)	16,2
Tip circle dk (mm)	182

Total length L (mm)	45
Hub	110
Taper-lock bush (Ref.-Nr.)	2517
Sprocket type	1

## Product Information

Taper-lock clamping hubs enable the precise axially-centred fixing of hubs on shafts. When used with sprockets, they offer a twofold advantage over a shaft-to-hub connection with keyways: quick fitting and better centring.

**REQUEST DIRECTLY ONLINE NOW**

<https://www.iwis.com/en-en/products-services/sprocket-with-taper-lock-bush-16b-1-21-teeth~p6983>

## Useful information

### **CALCULATION PROGRAM**

InduKet: the Chain Drive  
Calculation Program for  
Engineers.

[iwis.com/chaincalc](https://www.iwis.com/chaincalc)

### **CHAIN CALCULATION**

The right drive solution for your  
challenge.

[chaindrive@iwis.com](mailto:chaindrive@iwis.com)

### **SERVICES**

ChainFinder, CAD data, iwis  
Chain Handbook and more.

[iwis.com/services](https://www.iwis.com/services)